

The background features a series of concentric circles in light gray, some solid and some dashed, creating a subtle pattern. A large, solid blue rectangle is centered on the page, serving as a backdrop for the text. The text is white and centered within the blue rectangle.

# Embodied Teaching and Learning

Marissa Nesbit, PhD, MFA

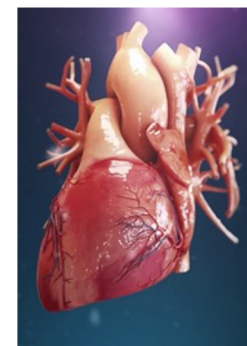
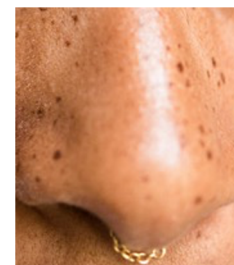
Assistant Professor of Dance Education

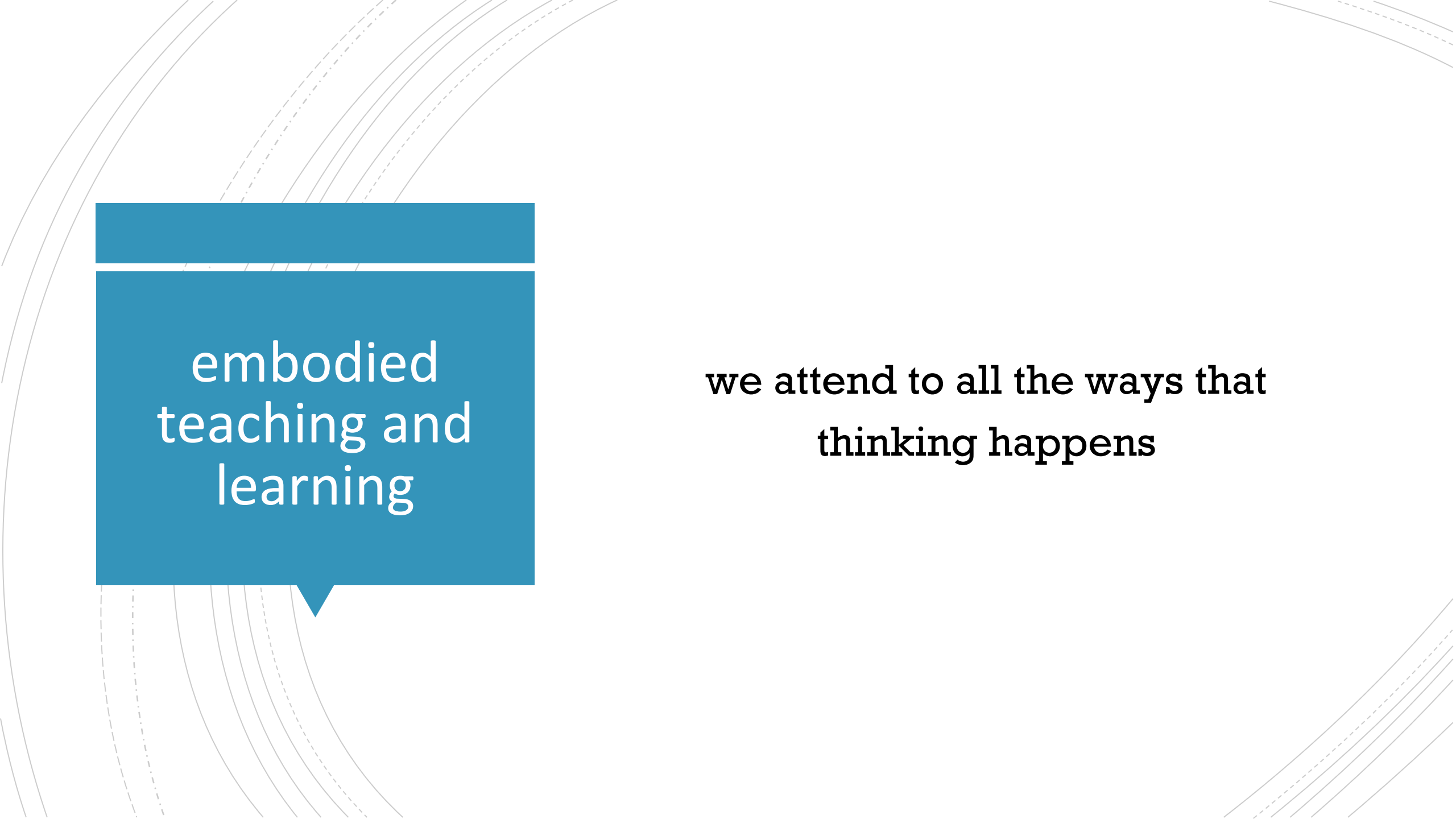
UNC Charlotte

The image features a solid teal rectangular box in the center. The background is white with faint, thin, concentric circles and dashed lines radiating from the center, creating a subtle geometric pattern.

think about your day

**WHERE** are  
you thinking?



The background features several thin, curved lines in a light gray color, some solid and some dashed, creating a sense of movement and depth. A blue speech bubble is positioned on the left side of the image.

embodied  
teaching and  
learning

we attend to all the ways that  
thinking happens



read

write

sense

interact

build

represent

move

listen

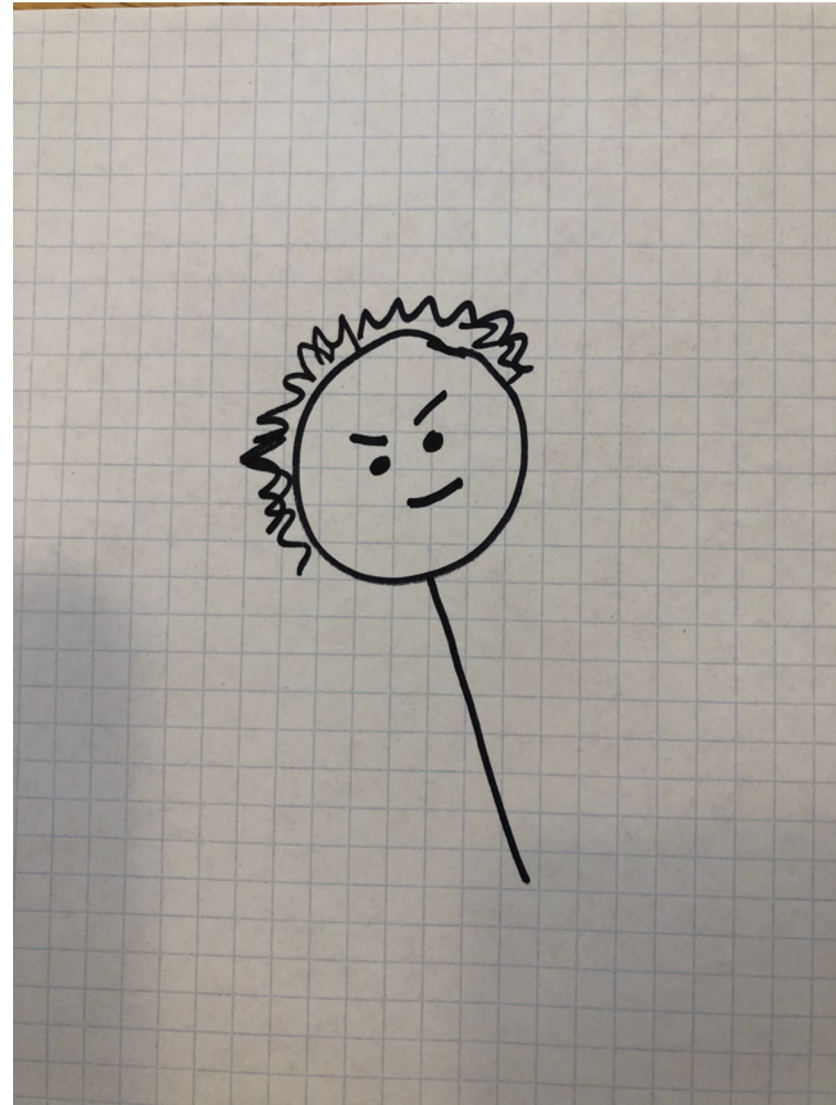
feel

notice

imagine

speak

we are not just a  
head on a stick



we are full,  
embodied beings





and so are our  
students



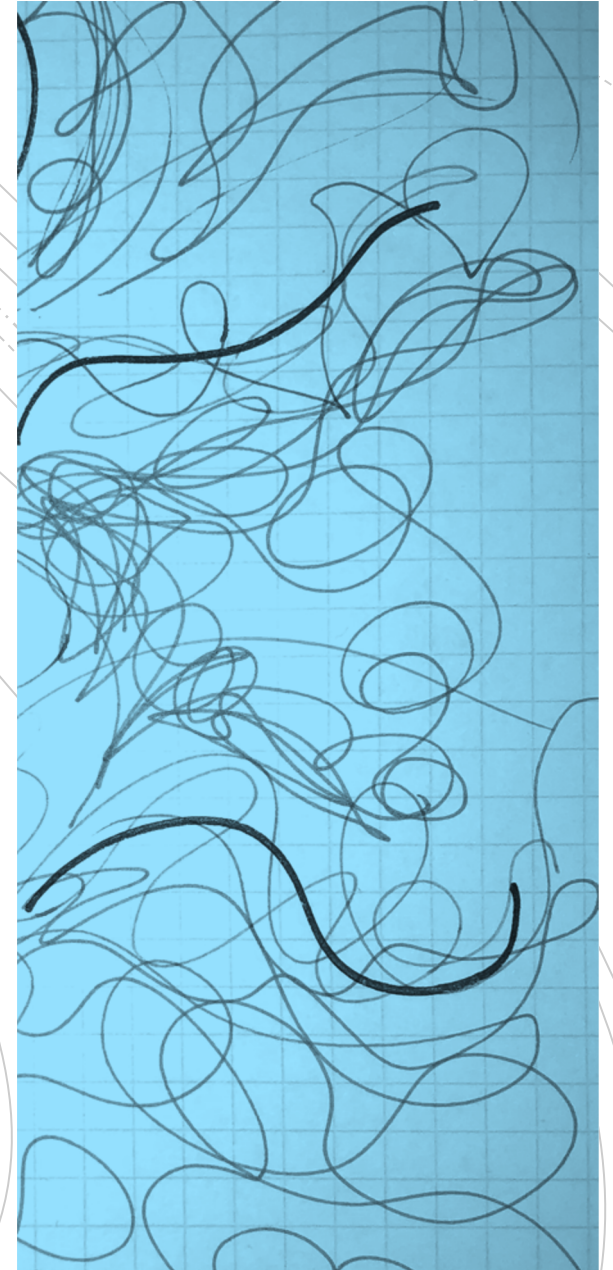
The background features a series of concentric circles in light gray, some solid and some dashed, creating a ripple effect. In the center, there is a large blue speech bubble with a white outline. The text is arranged within this bubble and on bars above and below it.

in this seminar we will

dig in

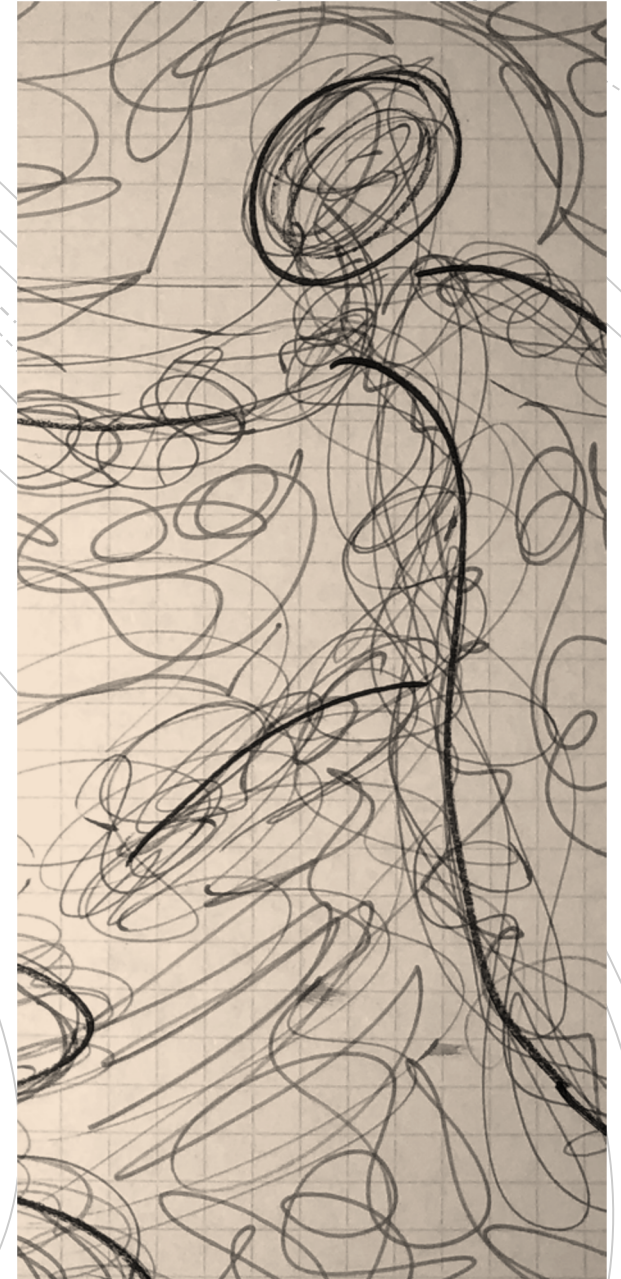
and work through some juicy questions

How do different cultural  
and historical perspectives  
inform how we think about  
the body?

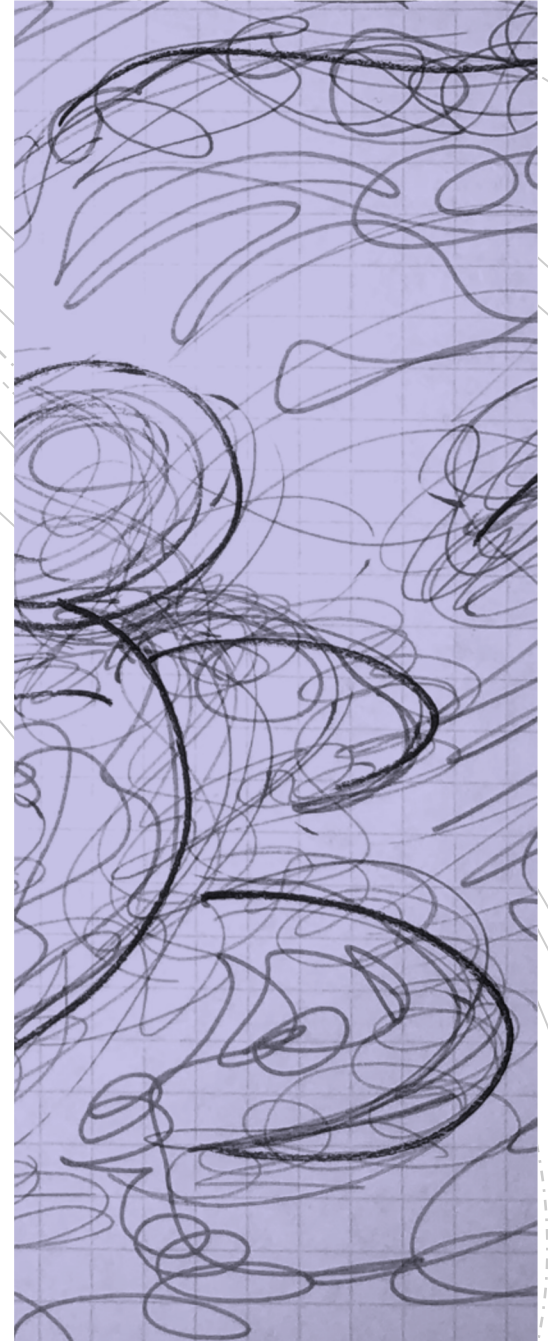




What stories have we each developed about our own and others' bodies, and how do our bodies tell the stories of our identity and history?

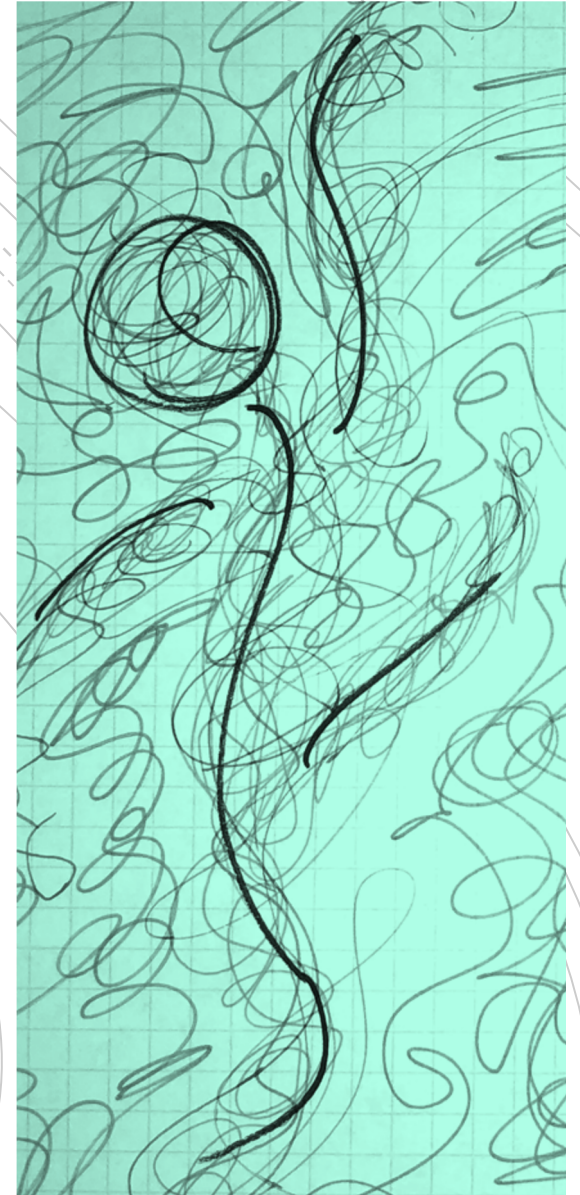


How do our expectations  
and awareness of our  
students as embodied  
beings shape our teaching  
practices?





How can attending to the  
role of the body in teaching  
and learning promote  
greater access and equity in  
education?



The background features a series of concentric circles in light gray, some solid and some dashed, creating a ripple effect. A large blue speech bubble is centered on the page, containing the word 'explore'. Above and below the speech bubble are horizontal bars in blue and green respectively, containing the text 'in this seminar we will' and 'as fully embodied learners'.

in this seminar we will

explore

as fully embodied learners

read

write

sense

interact

build

represent

move

listen

feel

notice

imagine

speak

The background features a series of concentric circles in light gray, some solid and some dashed, creating a ripple effect. Overlaid on this is a large, solid blue shape that resembles a speech bubble or a callout box, pointing downwards. The text is arranged within and around this shape.

in this seminar we will

create

space for embodiment in curriculum and pedagogy

arts integration

purposeful movement

physics

nonverbal communication

social-emotional learning

storytelling

design

biology

environment

ecology

somatics

writing

cultural studies

arts

math

communication

The background features a series of concentric circles in light gray, some solid and some dashed, creating a ripple effect. A large blue speech bubble is centered on the page, containing the text.

thank you!

I look forward to working with you.