

# THE GLOBAL ENERGY CHALLENGE



Seminar Leader:

Durwin Striplin

Seminar Coordinator:

DeNise Gerst

What are the most important influences on the development of our modern civilization?

The availability  
of usable energy

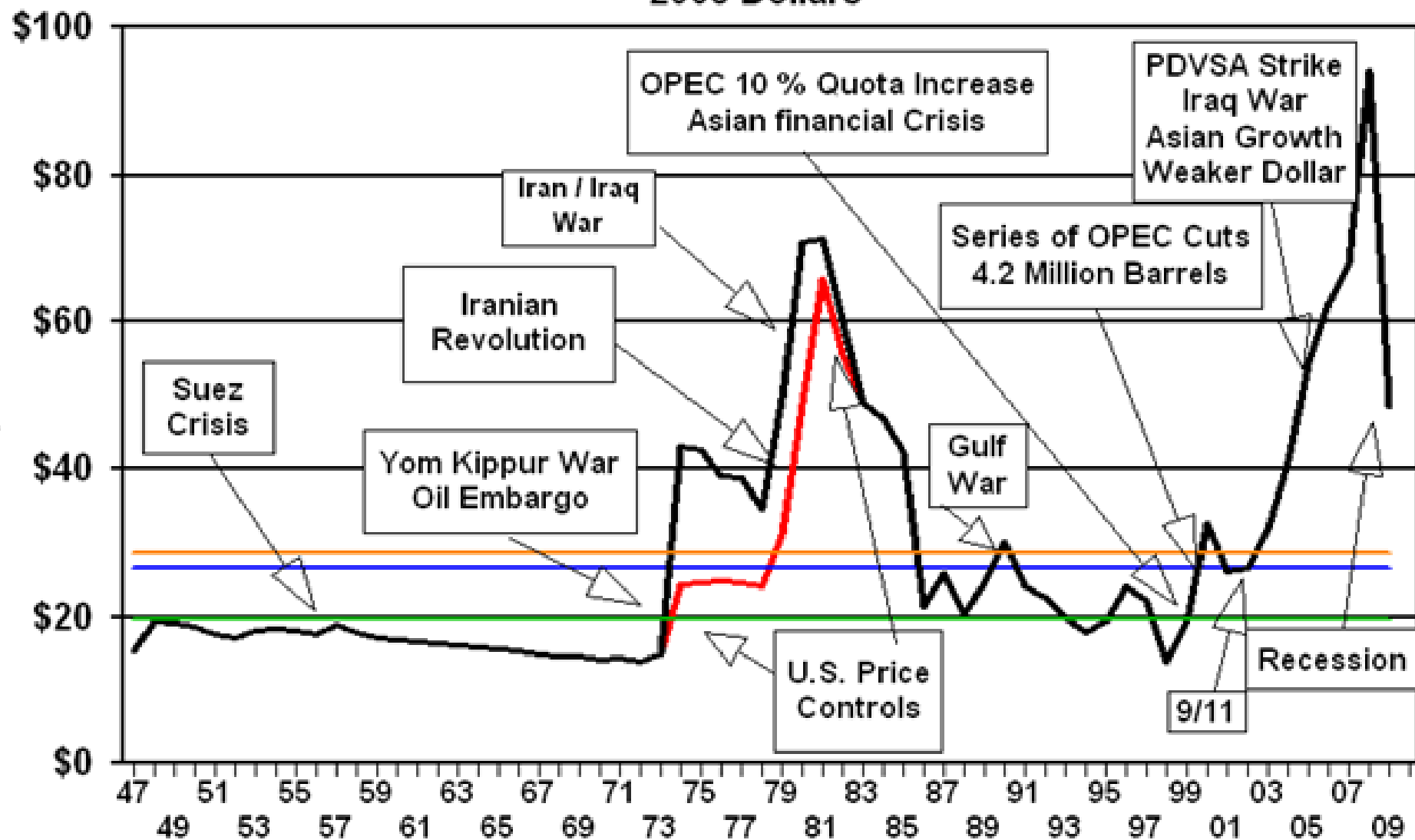






# Crude Oil Prices 2008 Dollars

2008 \$/BARREL



1947 - August, 2009 WTRG Economics ©1998-2009

— U.S. 1st Purchase Price ( Wellhead ) — "World Price" \*

www.wtrg.com  
(479) 293-4081

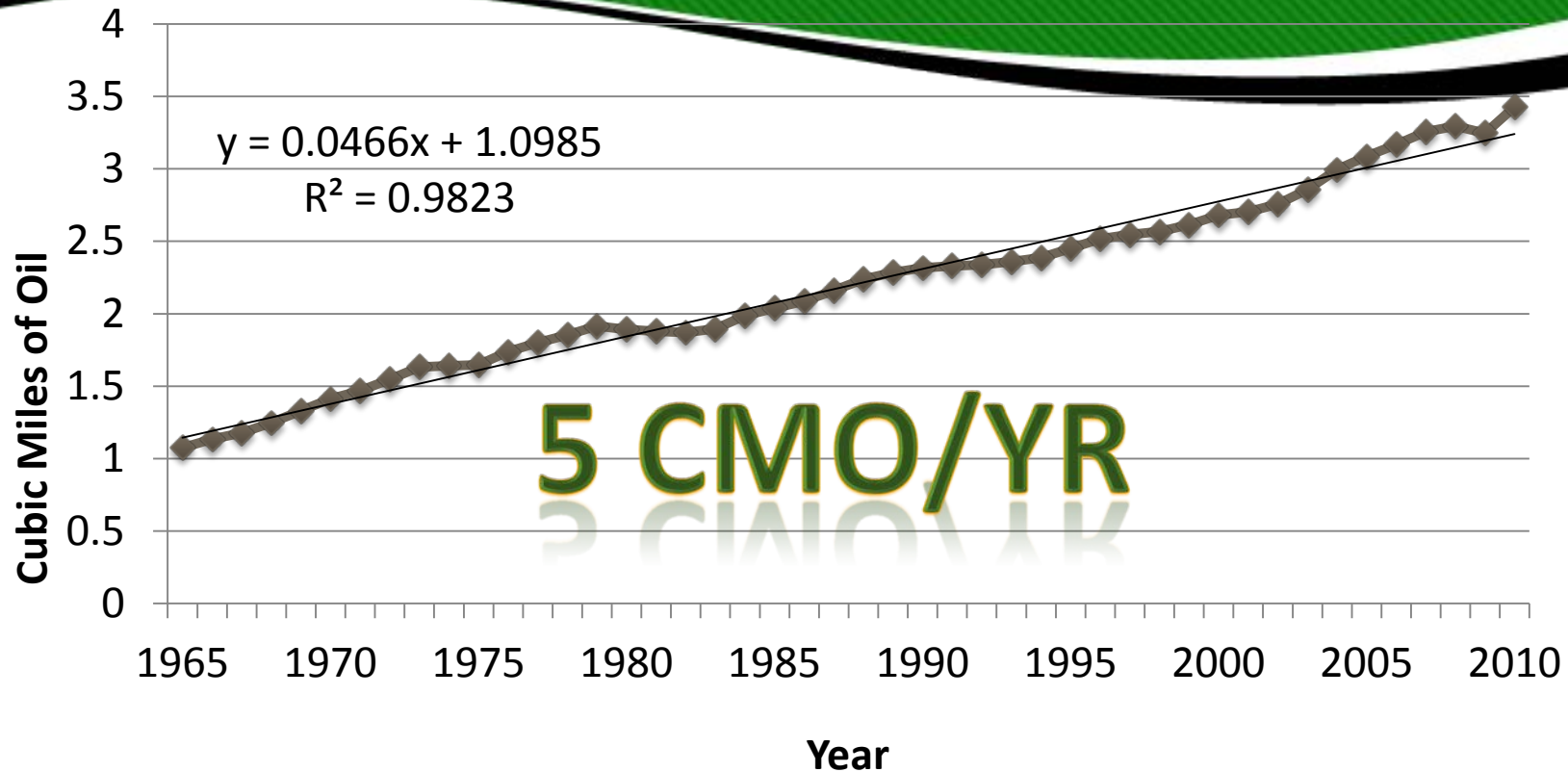
— Avg U.S. \$26.64 — Avg World \$28.68 — Median U.S. & World \$19.60

“It’s tough to make predictions, especially about the future.”

-Yogi Berra



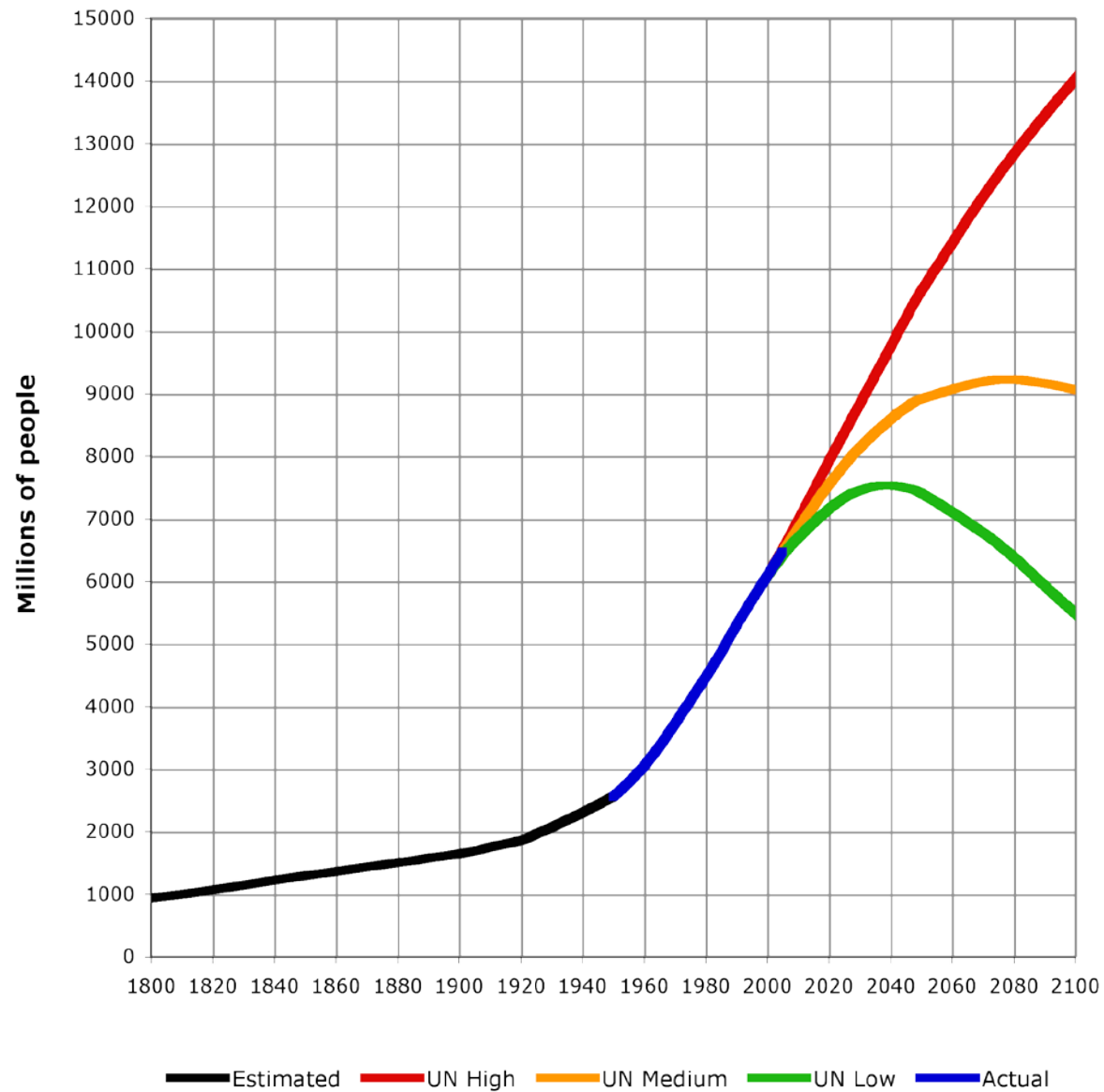
## Annual World Energy Consumption



**By the year 2050 (current rate), our energy needs could be over.....**

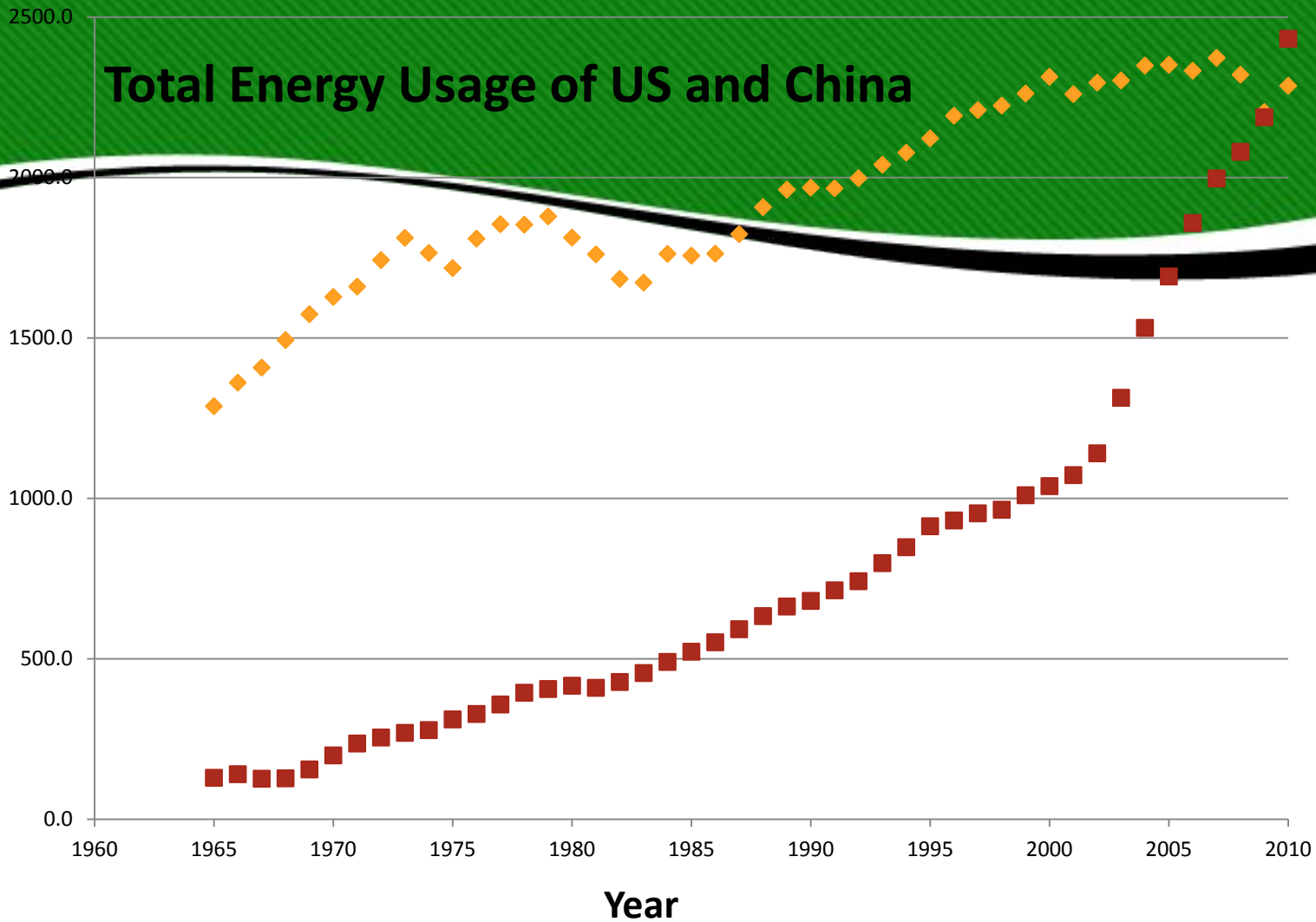


## 2004 UN Predictions



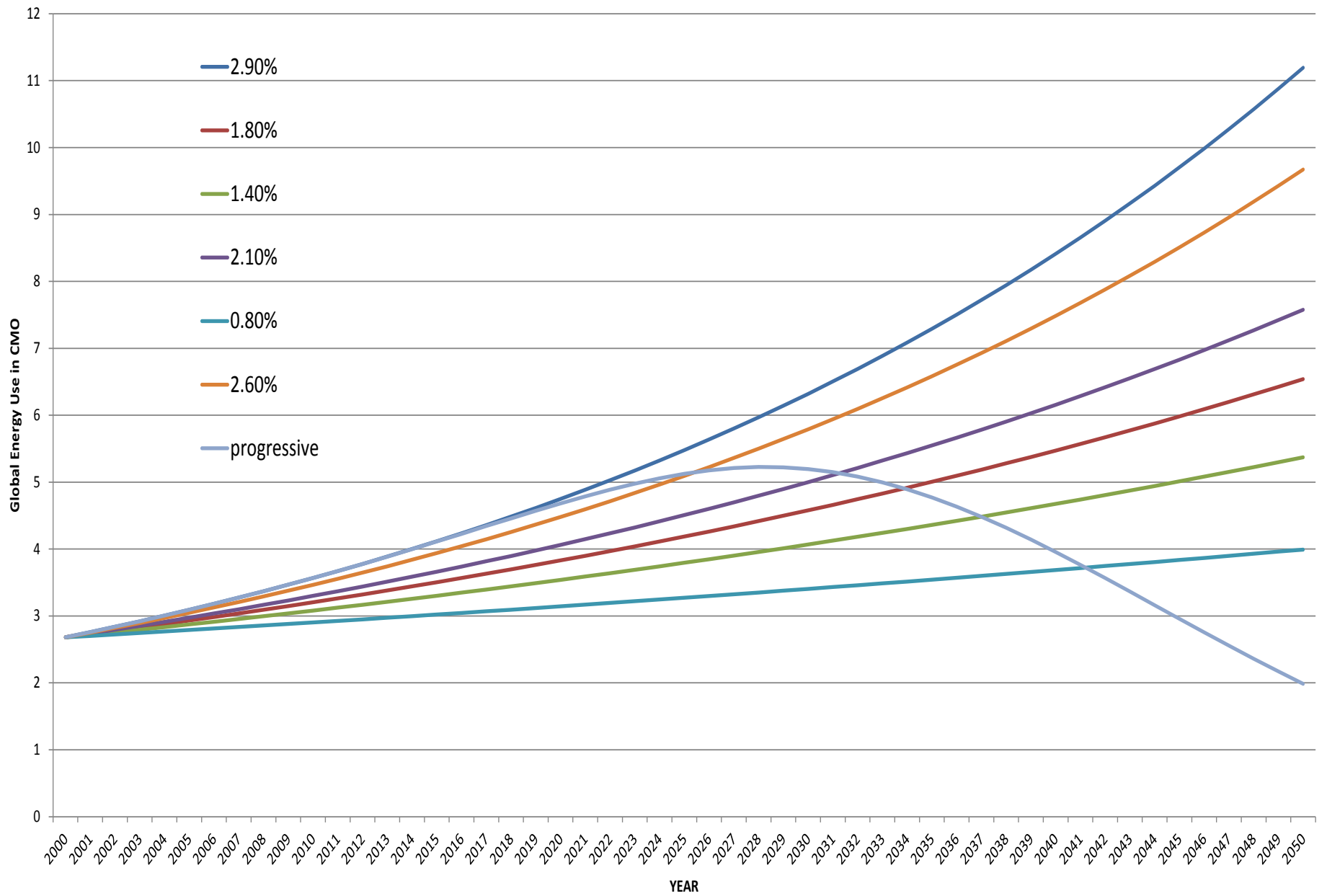
Energy Usage in Mtoe

## Total Energy Usage of US and China

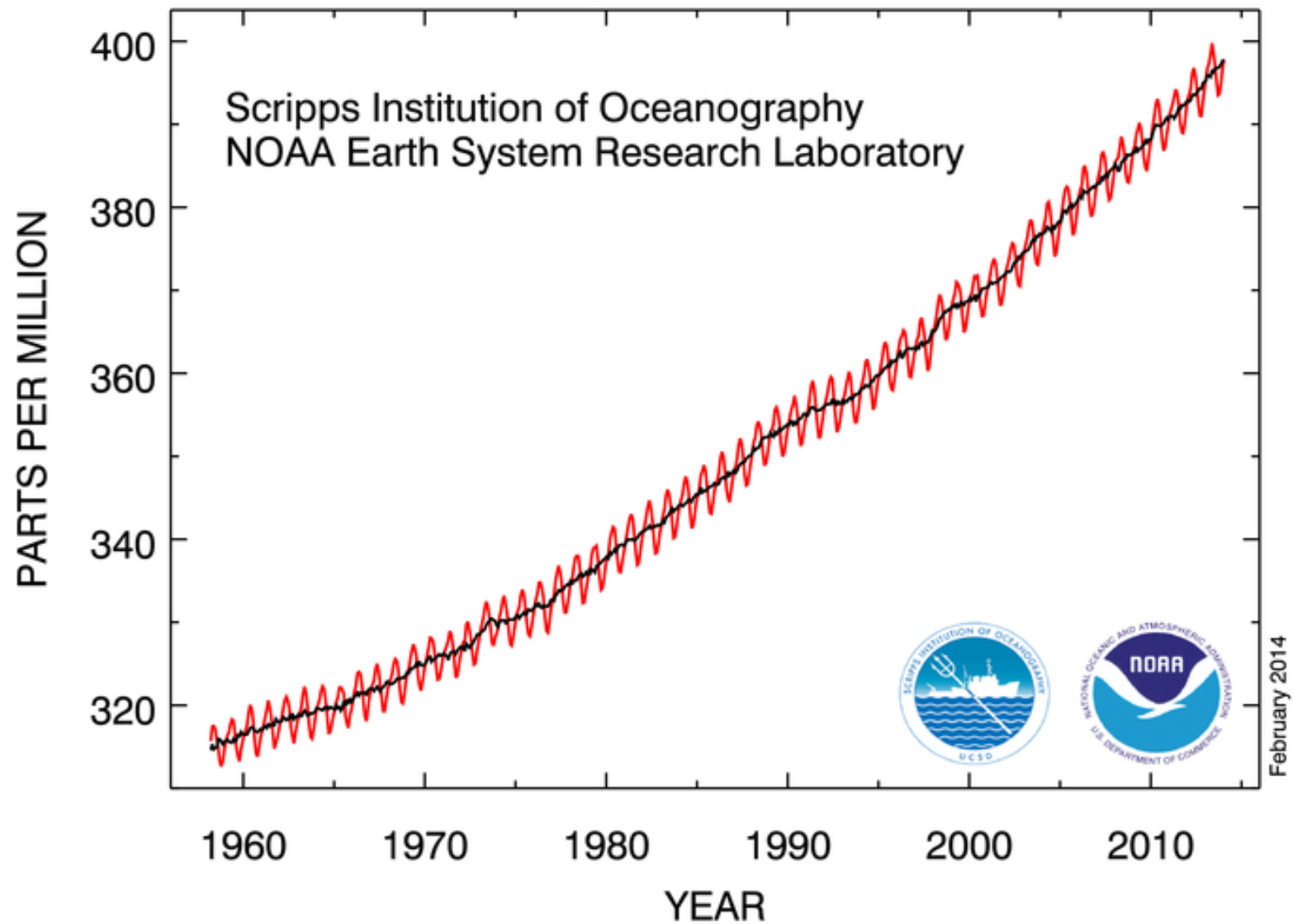


# US and China Energy Usage





# Atmospheric CO<sub>2</sub> at Mauna Loa Observatory





# SOMETHING FOR EVERYONE

- Math: Data collection
- Language Arts/Social Studies: How does this energy crisis affect people across the globe?
- Science: Energy sources, usage of energy
- World History: Patterns of energy usage, harmful sources of energy, how our environments have been changed by these sources
- Global Studies: Comparison of energy usage by country, availability of resources for other countries (i.e. 1st world vs. 3rd world)
- Economics: Cost of Energy, energy efficiency vs. cost
- Environmental studies: How energy sources harm the environment, ripple effect of harming the environment

